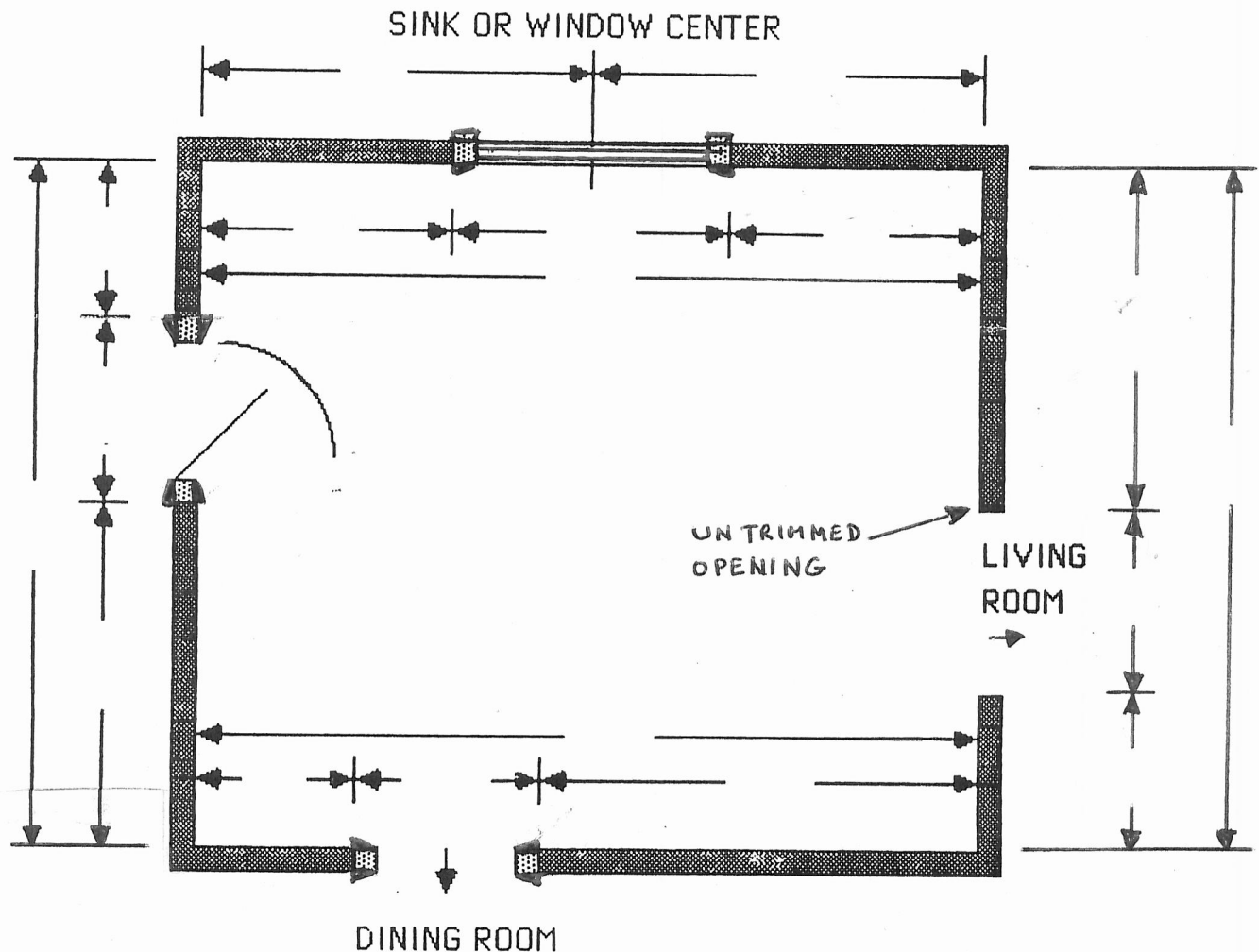


HOW TO MEASURE YOUR KITCHEN OR BATH



1. Using a straight edge and pencil, draw a sketch of the entire room to be designed.
2. Work in sequence around the room until returning to your starting point.
3. Measure all around room at same height; a few inches above the existing countertop is best.
4. Measure in INCHES only.
5. Always measure OUTSIDE to OUTSIDE of door and window casings.
6. DOUBLE CHECK YOUR MEASUREMENTS.